

Commercial Electric Compact Boilers

Standard Features

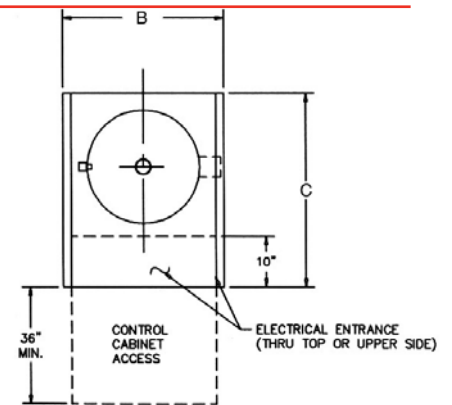
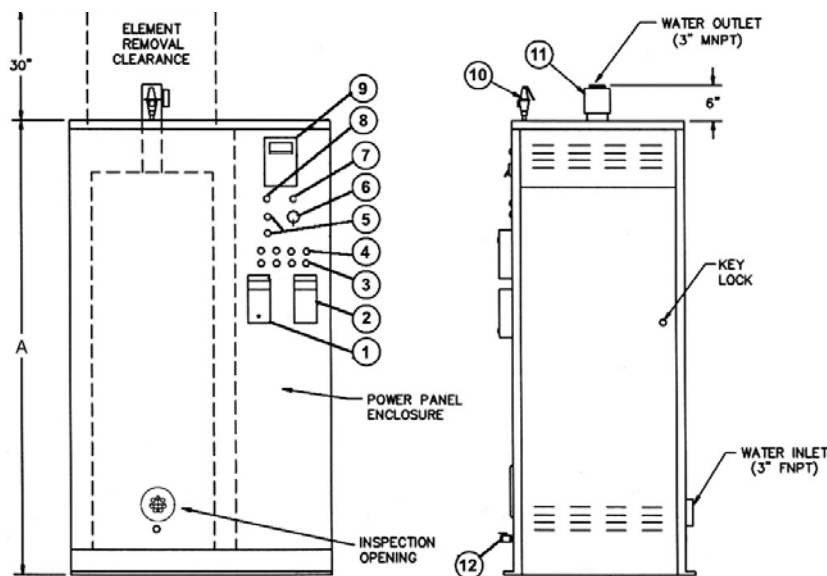
- ASME National Board Registered Pressure Vessel
- Heavy Duty Steel Boiler Vessel Housing
- 4" Fiberglass Insulation
- 3" NPT Inlet and Outlet Connection
- ASME Pressure Relief Valve
- Pressure Gauge with Cock
- Drain Valve
- Adjustable High Limit with Automatic Reset
- Adjustable High Limit with Manual Reset (units with more than 2 stages)
- Low Water Cut-Off
- Incoloy-Sheathed Elements
- Internal Branch Circuit Fusing
- Magnetic Contactors
- Main Supply Circuit Lugs
- 120 Volt Fused Control Transformer
- On/Off Switch with Pilot Light
- Manual Limit Toggle Switches (1 per step)
- Key Locked Door
- Electric Control Panel
- On/Off Temperature Switches (1 & 2 Step Models)
- Electronic Multi-Stage Control (3 & 4 Step Models)
- Proportional Solid State Step Control (Units with more than 4 Steps)
- Status Pilot Light for each Stage
- Digital Temperature Readout (except 1 & 2 Step)
- Listed by the Underwriters Laboratories
- 3 Year Limited Tank Warranty / 1 Year Parts Warranty (See warranty for details)

Optional Equipment

- Alarm Bell
- Automatic Breaker
- Flow Switch
- Fused Disconnect
- Ground Fault Detector
- Low Temperature Switch
- Main Power Disconnect
- Modulating Step Control
- Kilowatt/Hour Meter



Commercial Electric Compact Boiler Dimensions & Specifications



Components

1. Temperature Limit, Auto Reset
2. Temperature Limit, Manual Reset
3. Manual Limit Switches
4. Pilot Lights, Amber (Steps "On")
5. PB Switches (Low Water Cutoff "Test"/"Reset")
6. Toggle Switch (Control Power)
7. Pilot Light, Amber (Control Power "On")
8. Pilot Light, Red (Low Water)
9. Temperature Setpoint / Control / Readout
10. Safety Relief Valve
11. Temperature & Pressure Gauges
12. Drain Valve

Model Number	Max. Flow (gpm)	Connection Sizes (NPT)	Dia (In)	Vol (Gal)	Dimensions			Weight lbs.
					A	B	C	
BW*1-**C	230	3"	12"	22	52"	24"	30"	600
BW*2-**C	230	3"	16"	36	52"	28"	34"	800
BW*3-**C	230*	3"	20"	56	52"	32"	38"	1100

* 4"/300 GPM is Optional

Commercial Electric Compact Boilers

Ratings & Circuit Configurations

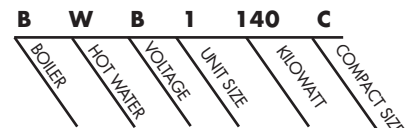
Model Number	Rating		208 & 240 VOLT				380 & 415 VOLT				480 VOLT			
	MBH	kW	Elements Qty	kW	Number of Circuits	Steps@ kW	Elements Qty	kW	Number of Circuits	Steps@ kW	Elements Qty	kW	Number of Circuits	Steps@ kW
BW*1-015C	51	15	1	15	1	1@15	1	15	1	1@15	1	15	1	1@15
BW*1-018C	61	18	-	-	-	-	-	-	-	-	1	18	1	1@18
BW*1-020C	68	20	2	10	2	1@20	-	-	-	-	1	20	1	1@20
BW*1-030C	102	30	2	15	2	1@30	2	15	1	1@30	2	15	1	1@30
BW*1-036C	123	36	-	-	-	-	-	-	-	-	2	18	1	1@36
BW*1-040C	136	40	4	10	4	2@20	-	-	-	-	2	20	1	1@40
BW*1-045C	154	45	3	15	3	1@15, 1@30	3	15	2	1@15, 1@30	3	15	2	1@15, 1@30
BW*1-054C	184	54	-	-	-	-	-	-	-	-	3	18	2	1@18, 1@36
BW*1-060C	205	60	4	15	4	2@30	4	15	2	2@30	4	15	2	2@30
BW*1-072C	246	72	-	-	-	-	-	-	-	-	4	18	2	2@36
BW*1-075C	256	75	5	15	5	1@15, 2@30	5	15	3	1@45, 1@30	5	15	3	1@45, 1@30
BW*1-080C	273	80	8	10	8	4@20	-	-	-	-	4	20	2	2@40
BW*1-090C	307	90	6	15	6	3@30	6	15	3	3@30	5	18	3	1@18, 2@36
BW*1-100C	341	100	-	-	-	-	-	-	-	-	5	20	3	1@20, 2@40
BW*1-105C	358	105	7	15	7	1@15, 3@30	7	15	4	1@45, 2@30	7	15	4	1@45, 2@30
BW*1-108C	368	108	-	-	-	-	-	-	-	-	6	18	3	3@36
BW*1-120C	409	120	8	15	8	4@30	8	15	4	4@30	6	20	3	3@40
BW*1-126C	430	126	-	-	-	-	-	-	-	-	7	18	4	1@18, 3@36
BW*2-135C	461	135	9	15	9	1@45, 3@30	9	15	5	1@45, 3@30	9	15	5	1@45, 3@30
BW*1-140C	478	140	-	-	-	-	-	-	-	-	7	20	4	1@20, 3@40
BW*1-144C	491	144	-	-	-	-	-	-	-	-	8	18	4	4@36
BW*2-150C	512	150	10	15	10	5@30	10	15	5	5@30	10	15	5	5@30
BW*1-160C	546	160	-	-	-	-	-	-	-	-	8	20	4	4@40
BW*2-165C	563	165	11	15	11	1@45, 4@30	11	15	6	1@45, 4@30	11	15	6	1@45, 4@30
BW*2-180C	614	180	12	15	12	6@30	12	15	6	6@30	10	18	5	5@36
BW*2-200C	682	200	-	-	-	-	-	-	-	-	10	20	5	5@40
BW*3-210C	717	210	14	15	14	7@30	14	15	7	7@30	14	15	7	7@30
BW*2-216C	737	216	-	-	-	-	-	-	-	-	12	18	6	6@36
BW*3-225C	768	225	15	15	15	1@45, 6@30	15	15	8	1@45, 6@30	15	15	8	1@45, 6@30
BW*2-240C	819	240	-	-	-	-	-	-	-	-	12	20	6	6@40
BW*3-240C	819	240	16	15	16	8@30	16	15	8	8@30	16	15	8	8@30
BW*3-252C	860	252	-	-	-	-	-	-	-	-	14	18	7	7@36
BW*3-270C#	921	270	18	15	18	9@30	18	15	9	1@60, 7@30	15	18	8	1@18, 7@36
BW*3-280C	955	280	-	-	-	-	-	-	-	-	14	20	7	7@40
BW*3-288C	983	288	-	-	-	-	-	-	-	-	16	18	8	8@36
BW*3-300C#	1024	300	20	15	20	10@30	20	15	10	2@60, 6@30	15	20	8	1@20, 7@40
BW*3-320C	1092	320	-	-	-	-	-	-	-	-	16	20	8	8@40
BW*3-330C#	1126	330	22	15	22	11@30	22	15	11	3@60, 5@30	22	15	11	5@30, 3@60
BW*3-360C#	1228	360	24	15	24	12@30	24	15	12	4@60, 4@30	20	18	10	6@36, 2@72
BW*3-400C	1365	400	-	-	-	-	-	-	-	-	20	20	10	6@40, 2@80
BW*3-440C	1501	440	-	-	-	-	-	-	-	-	22	20	11	5@40, 3@80
BW*3-480C	1638	480	-	-	-	-	-	-	-	-	24	20	12	4@40, 4@80

Notes: # = Oversize control cabinets are supplied for these models at 208 & 240 volts.

VOLTAGE SCHEDULE

A - 240V	1PH
B - 240V	3PH
J - 208V	1PH
K - 208V	3PH
X - 480V	3PH
W - 277V	1PH
Y - 380V	3PH
Z - 415V	3PH

FOR EASE IN ORDERING BY MODEL NUMBER



This is a 240 volt, three phase, 140 Kilowatt compact size electric hot water boiler.

Operating temperature and pressure are requested prior to placing an order.



Lochinvar®
High Efficiency Water Heaters, Boilers and Pool Heaters



Lochinvar Corporation • 300 Maddox Simpson Pkwy • Lebanon, TN 37090 • 615-889-8900 / Fax: 615-547-1000

www.Lochinvar.com