

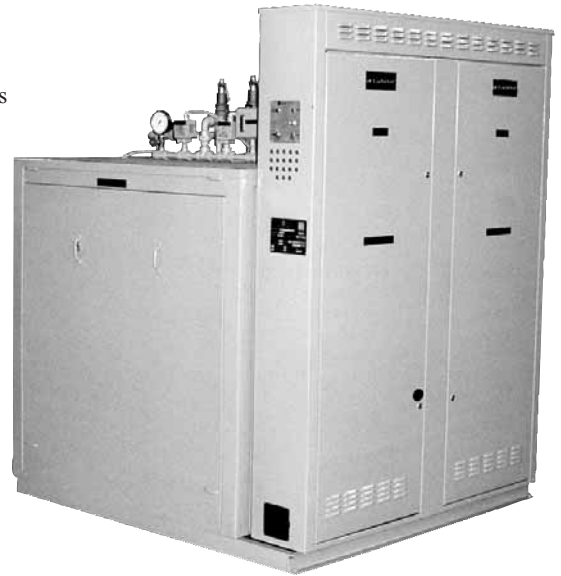
# Commercial Electric Steam Boilers

## Standard Features

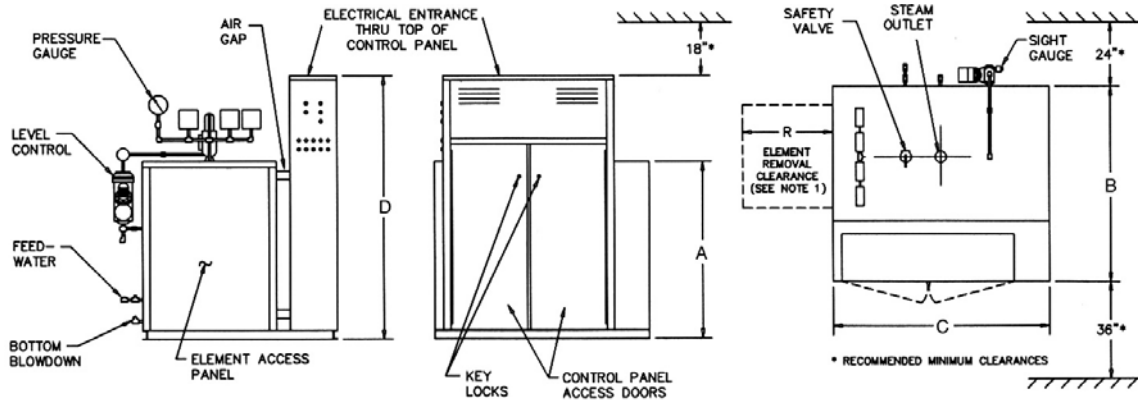
- ASME National Board Registered Pressure Vessel
- Heavy Duty Steel Boiler Vessel Housing
- 3" Fiberglass Insulation
- ASME Pressure Relief Valve
- Pressure Gauge with Gauge Cock
- Feedwater Stop & Check Valves
- Full-Port Bottom Blowdown Valve
- Combination Float-Type Level Control / Low Water Cut-Off with Blowdown Valve
- Water Level Sight Gauge with Blowdown Valve
- Surface Blowoff Provision
- Low Water Cut-Off with Manual Reset & Pilot Light
- Adjustable High Limit with Automatic Reset
- Adjustable High Limit with Manual Reset
- Incoloy-Sheathed Elements
- Internal Branch Circuit Fusing
- Magnetic Contactors
- Main Supply Circuit Lugs
- 120 Volt Fused Control Transformer
- On/Off Switch with Pilot Light
- Preheat Switch with Pilot Light (above 240 kW)
- Key Locked Door
- Electric Control Panel
- Staged On/Off Pressure Switches (1, 2 & 3 Step Models)
- Proportional Solid State Step Control (models with more than 3 Steps)
- Status Pilot Light for each Stage/Step
- Listed by the Underwriters Laboratories
- 3 Year Limited Tank Warranty / 1 Year Parts Warranty  
(See warranty for details)

## Optional Equipment

- Alarm Bell
- Automatic Breaker
- Automatic Feed Water Solenoid Valve
- Fused Disconnect
- Ground Fault Detector
- Kilowatt/Hour Meter
- Main Power Disconnect
- Manual Limit Toggle Switches (1 per Step)
- Automatic Timed Surface Blowoff System



## Commercial Electric Steam Boiler Dimensions & Specifications



Note 1: Element removal clearance (R") is equal to 2 times the element KW.

Model Number	Max. Input kW	Max. Steam F&A 212°F (PPH)	Max. # of Elements	Connection Sizes (NPT)					Tank Data		Dimensions (Inches)				Weight (lbs)		
				Feed Water	Blowdown 15psi	Blowdown >15psi	Steam Outlet 15psi	Steam Outlet 50psi	Steam Outlet 150psi	Dims (In)	Vol (Gal)	A	B	C	D	Ship	Oper.
BS*12	60	205	3	1/2"	3/4"	3/4"	1-1/4"	1"	3/4"	12x42	20	22"	28"	50"	25"	550	650
BS*16	140	478	7	1/2"	3/4"	3/4"	2"	1"	3/4"	16x42	32	26"	32"	50"	33"	750	910
BS*16	200	682	10	1/2"	3/4"	3/4"	2"	1-1/4"	3/4"	16x42	32	26"	32"	54"	33"	800	960
BS*20	240	819	12	3/4"	1"	1"	2-1/2"	1-1/4"	1"	20x42	41	30"	36"	50"	51"	1000	1200
BS*20	320	1092	18	3/4"	1"	1"	3"	1-1/2"	1"	20x42	41	30"	36"	54"	51"	1050	1250
BS*24	360	1228	18	3/4"	1-1/4"	1"	3"	1-1/2"	1-1/4"	24x44	74	34"	40"	52"	51"	1300	1670
BS*24	600	2047	30	3/4"	1-1/4"	1"	4" FLG	2"	1-1/2"	24x44	74	34"	40"	56"	51"	1400	1770
BS*30	960	3276	48	3/4"	1-1/2"	1"	6" FLG	3" FLG	2"	30x46	124	40"	48"	60"	63"	1700	2340
BS*36	1280	4367	64	1"	1-1/2"	1"	6" FLG	3" FLG	2"	36x46	166	46"	54"	60"	63"	2100	2960
BS*42	1880	6415	94	1"	1-1/2"	1"	8" FLG	4" FLG	3" FLG	42x48	230	52"	62"	64"	81"	2800	4000
BS*48	2400	8325	122	1"	2"	1-1/4"	8" FLG	5" FLG	3" FLG	48x54	345	58"	63"	70"	87"	4600	6300
BS*54	3040	11598	152	1-1/4"	2"	1-1/4"	10" FLG	6" FLG	4" FLG	54x60	500	66"	74"	76"	89"	5600	8100

# Commercial Electric Steam Boilers

## 208 & 240 Volt Ratings

Model Number	Rating PPH <sup>†</sup>	Elements kW	Number of Qty	Number of Cir.	Steps@ kW	Amps (208/3)
BS*12-015	51	15	1	1	1@15	42
BS*12-030	102	30	2	1	1@30	84
BS*12-045	154	45	3	1	1@15,1@30	125
BS*12-060	205	60	4	2	2@30	167
BS*12-075	256	75	5	1	1@15,2@30	209
BS*16-090	307	90	6	3	3@30	251
BS*16-105	358	105	7	1	1@15,3@30	292
BS*16-120	409	120	8	4	4@30	334
BS*16-135	461	135	9	1	1@15,4@30	376
BS*16-150	512	150	10	5	5@30	417
BS*20-165	563	165	11	1	1@15,5@30	459
BS*20-180	614	180	12	6	6@30	501
BS*20-195	665	195	13	1	1@15,6@30	542
BS*20-210	717	210	14	7	7@30	584
BS*20-225	768	225	15	1	1@15,7@30	626
BS*20-240	819	240	16	8	8@30	667
BS*24-255	870	255	17	1	1@45,7@30	709
BS*24-270	921	270	18	1	1@60,7@30	751
BS*24-285	972	285	19	1	1@60,1@45,6@30	793
BS*24-300	1024	300	20	2	2@60,6@30	834
BS*24-315	1075	315	21	2	2@60,1@45,5@30	876
BS*24-330	1126	330	22	3	3@60,5@30	918
BS*24-345	1177	345	23	3	3@60,1@45,4@30	959
BS*24-360	1228	360	24	4	4@60,4@30	1001
BS*24-375	1280	375	25	4	4@60,1@45,3@30	1042
BS*24-390	1331	390	26	5	5@60,3@30	1084
BS*24-420	1433	420	28	6	6@60,2@30	1167
BS*24-450	1535	450	30	7	7@60,1@30	1251
BS*30-480	1638	480	32	8	8@60	1334
BS*30-510	1740	510	34	7	7@60,3@30	1418
BS*30-540	1842	540	36	8	8@60,2@30	1501
BS*30-570	1945	570	38	9	9@60,1@30	1584
BS*30-600	2047	600	40	10	10@60	1667

† From & at 212°F.

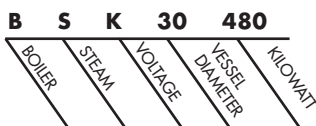
\* Indicates Voltage

Models above 390KW are also available in 15KW increments.

### VOLTAGE SCHEDULE

A – 240V	1PH
B – 240V	3PH
J – 208V	1PH
K – 208V	3PH
X – 480V	3PH
W – 277V	1PH
Y – 380V	3PH
Z – 415V	3PH

### FOR EASE IN ORDERING BY MODEL NUMBER



This is a 208 volt, three phase, 480 Kilowatt electric steam boiler with a 30 inch diameter vessel.

Operating temperature and pressure are requested prior to placing an order.



**Lochinvar**<sup>®</sup>  
High Efficiency Water Heaters, Boilers and Pool Heaters



Lochinvar Corporation • 300 Maddox Simpson Pkwy  
Lebanon, TN 37090 • 615-889-8900 / Fax: 615-547-1000

## 480 Volt Ratings

Model Number	Rating PPH <sup>†</sup>	Elements kW	Number of Qty	Number of Cir.	Steps@ kW	Amps (480/3)
BSX12-030	102	30	2	1	1@30	36
BSX12-036	123	36	2	1	1@36	44
BSX12-040	136	40	2	1	1@40	48
BSX12-045	154	45	3	1	1@15,1@30	54
BSX12-054	184	54	3	1	1@18,1@36	65
BSX16-060	205	60	4	2	2@30	72
BSX16-072	246	72	4	2	2@36	87
BSX16-080	273	80	4	2	2@40	96
BSX16-090	307	90	6	3	3@30	109
BSX16-108	368	108	6	3	3@36	130
BSX16-120	409	120	6	3	3@40	145
BSX16-126	430	126	7	4	1@18,3@36	152
BSX16-140	478	140	7	4	1@20,3@40	169
BSX16-144	491	144	8	4	4@36	173
BSX16-150	512	150	10	5	5@30	181
BSX16-160	546	160	8	4	4@40	193
BSX16-180	614	180	10	5	5@36	217
BSX16-200	682	200	10	5	5@40	241
BSX20-180	614	180	12	6	6@30	217
BSX20-198	676	198	11	6	1@18,5@36	238
BSX20-210	717	210	14	7	7@30	253
BSX20-216	737	216	12	6	6@36	260
BSX20-220	751	220	11	6	1@20,5@40	265
BSX20-240	819	240	12	6	6@40	289
BSX20-252	860	252	14	7	7@36	303
BSX20-260	887	260	13	7	1@20,6@40	313
BSX20-270	921	270	15	8	1@18,7@36	325
BSX20-280	955	280	14	7	7@40	337
BSX20-320	1092	320	16	8	8@40	385
BSX24-360	1228	360	18	9	9@40	433
BSX24-400	1365	400	20	10	10@40	481
BSX24-440	1501	440	22	11	1@80,9@40	530
BSX24-480	1638	480	24	12	2@80,8@40	578
BSX24-520	1774	520	26	13	3@80,7@40	626
BSX24-560	1911	560	28	14	4@80,6@40	674
BSX24-600	2047	600	30	15	5@80,5@40	722
BSX30-640	2184	640	32	16	8@80	771
BSX30-680	2320	680	34	17	7@80,3@40	819
BSX30-720	2457	720	36	18	8@80,2@40	867
BSX30-760	2593	760	38	19	9@80,1@40	915
BSX30-800	2730	800	40	20	10@80	963
BSX30-840	2866	840	42	20	9@80,3@40	1011
BSX30-880	3003	880	44	22	10@80,2@40	1059
BSX30-920	3139	920	46	23	11@80,1@40	1107
BSX30-960	3276	960	48	24	12@80	1155
BSX36-1000	3412	1000	50	25	1@120,11@80	1204
BSX36-1040	3548	1040	52	26	2@120,10@80	1252
BSX36-1120	3821	1120	56	28	4@120,8@80	1348
BSX36-1200	4094	1200	60	30	6@120,6@80	1444
BSX36-1280	4367	1280	64	32	8@120,4@80	1540
BSX42-1320	4504	1320	66	33	9@120,3@80	1589
BSX42-1400	4777	1400	70	35	11@120,1@80	1685
BSX42-1480	5050	1480	74	37	9@120,5@80	1781
BSX42-1560	5323	1560	78	39	11@120,3@80	1877
BSX42-1640	5596	1640	82	41	13@120,1@80	1973
BSX42-1720	5869	1720	86	43	11@120,5@80	2070
BSX42-1800	6142	1800	90	45	13@120,3@80	2166
BSX42-1880	6415	1880	94	47	15@120,1@80	2262
BSX48-1920	6551	1920	96	48	16@120	2310
BSX48-2000	6824	2000	100	50	14@120,4@80	2406
BSX48-2080	7097	2080	104	52	16@120,2@80	2503
BSX48-2160	7370	2160	108	54	18@120	2599
BSX48-2240	7643	2240	112	56	16@120,2@80	2695
BSX48-2320	7916	2320	116	58	18@120,2@80	2791
BSX48-2400	8189	2400	120	60	20@120	2888
BSX54-2480	8462	2480	124	62	18@120,4@80	2984
BSX54-2560	8735	2560	128	64	20@120,2@80	3080
BSX54-2640	9008	2640	132	66	22@120	3176
BSX54-2720	9281	2720	136	68**	20@120,4@80	3272
BSX54-2800	9554	2800	140	70**	22@120,2@80	3369
BSX54-2880	9827	2880	144	72**	24@120	3465

† From & at 212°F.

\*\*These models may require 2 power panels (add 12 to B Dim.).

Models above 1040kW are also available in 40kW increments.