

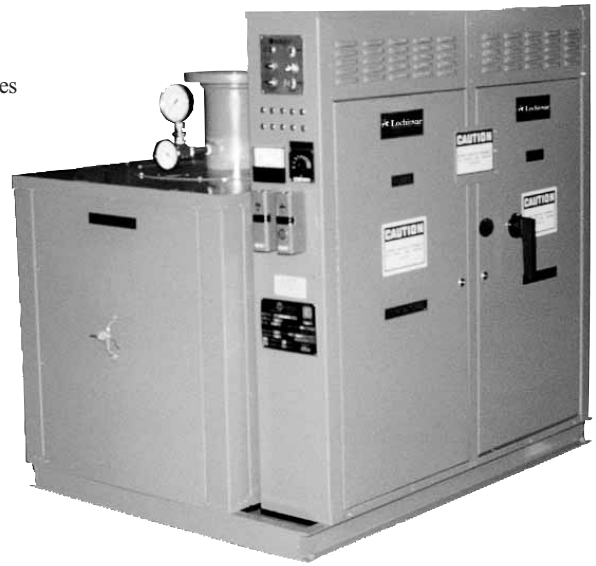
# Commercial Electric Hot Water Boilers

## Standard Features

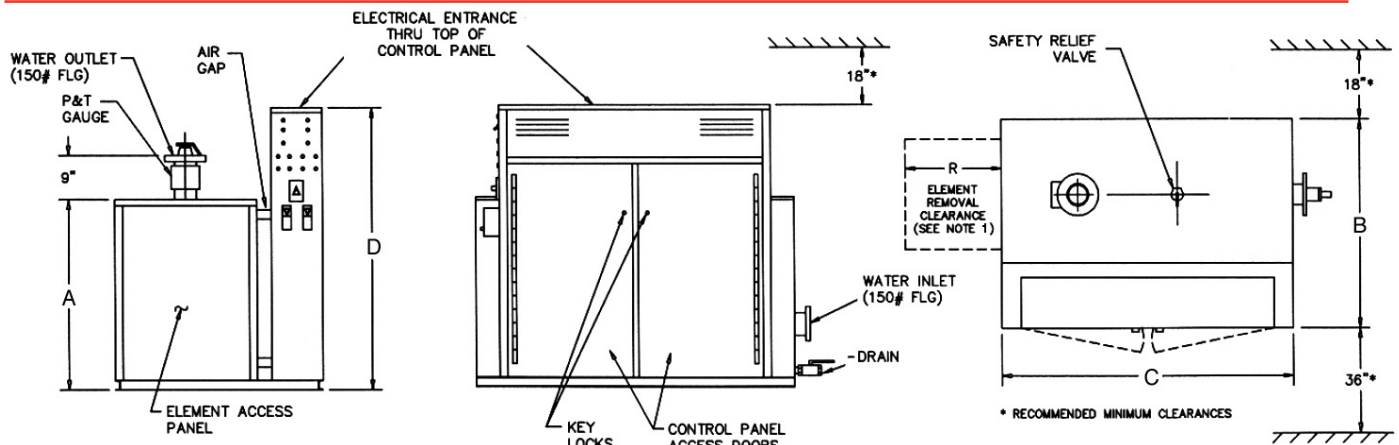
- ASME National Board Registered Pressure Vessel
- Heavy Duty Steel Boiler Vessel Housing
- 3" Fiberglass Insulation
- Flanged Inlet and Outlet Connection (above 3")
- ASME Pressure Relief Valve
- Pressure Gauge with Cock
- Drain Valve
- Low Water Cut-Off with Manual Reset
- Adjustable High Limit with Automatic Reset
- Adjustable High Limit with Manual Reset
- Incoloy Sheathed Elements
- Internal Branch Circuit Fusing
- Magnetic Contactors
- Main Supply Circuit Lugs
- 120 Volt Fused Control Transformer
- On/Off Switch with Pilot Light
- Preheat Switch with Pilot Light (above 240 kW)
- Key Locked Door
- On/Off Temperature Switches (1 & 2 Step Models)
- Electronic Multi-Stage Control (3 & 4 Step Models)
- Proportional Solid State Step Control (Units with more than 4 Steps)
- Status Pilot Light for each Step
- Digital Temperature Readout (Except 1 & 2 Step)
- Listed by the Underwriters Laboratories
- 3 Year Limited Tank Warranty / 1 Year Parts Warranty (See warranty for details)

## Optional Equipment

- Alarm Bell
- Automatic Breaker
- Flow Switch
- Fused Disconnect
- Ground Fault Detector
- Low Temperature Switch
- Main Power Disconnect
- Manual Limit Toggle Switches (1 per step)
- Kilowatt/Hour Meter



## Commercial Electric Hot Water Boiler Dimensions & Specifications



Note 1: Element removal clearance (R") is equal to 2 times the element kW.

Model Number	Max Input kW	MBH Per Hour	Max # of Elements	Connection Sizes (NPT)		Max. Flow GPM	Tank Dims (In)	Data Vol (Gal)	Dimensions (Inches)				Weight (lbs.)	
				In/Out	Drain				A	B	C	D	Ship	Oper.
BW*20	320	1092	16	4" FLG	1"	300	20x42	40	30"	36"	50"	51"	1000	1320
BW*20	520	1774	26	4" FLG	1-1/4"	300	20x42	40	30"	36"	54"	51"	1050	1370
BW*24	600	2047	30	4" FLG	1-1/4"	470	24x44	70	34"	40"	52"	51"	1300	1860
BW*24	920	3139	46	6" FLG	1-1/2"	680	24x44	70	34"	40"	56"	63"	1500	2060
BW*30	1560	5323	78	6" FLG	1-1/2"	900	30x48	125	40"	50"	60"	75"	1900	2900
BW*36	2000	6824	100	8" FLG	2"	1170	36x48	165	46"	56"	62"	87"	2400	3720
BW*42	3000	10236	150	10" FLG	2"	1840	42x50	260	54"	76"	64"	77"	3600	5760
BW*48	3600	12283	180	10" FLG	2"	1840	48x52	340	60"	82"	66"	89"	4600	7420

# Commercial Electric Hot Water Boilers

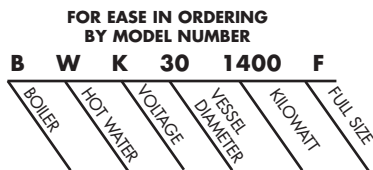
## 208 & 240 Volt Ratings

Model Number	Rating MBH	Rating kW	Elements Qty	Elements kW	Number of Cir.	Number of Steps@ kW	Amps (208/3)
BW*24-435F	1484	435	29	15	29	6@60,1@45,1@30	1210
BW*24-450F	1535	450	30	15	30	7@60,1@30	1251
BW*24-465F	1587	465	31	15	31	7@60,1@45	1293
BW*24-480F	1638	480	32	15	32	8@60	1334
BW*24-495F	1655	495	33	15	33	6@60,1@45,3@30	1376
BW*24-510F	1740	510	34	15	34	7@60,3@30	1418
BW*24-525F	1791	525	35	15	35	7@60,8@60,2@30	1459
BW*24-540F	1842	540	36	15	36	8@60,2@30	1501
BW*24-555F	1894	555	37	15	37	8@60,1@45,1@30	1543
BW*24-570F	1945	570	38	15	38	9@60,1@30	1584
BW*24-585F	1996	585	39	15	39	9@60,1@45	1626
BW*24-600F	2047	600	40	15	40	10@60	1668

Notes: For lower KW ratings, please refer to the Compact Boiler.  
\* Indicates Voltage

### VOLTAGE SCHEDULE

A - 240V	1PH
B - 240V	3PH
J - 208V	1PH
K - 208V	3PH
X - 480V	3PH
W - 277V	1PH
Y - 380V	3PH
Z - 415V	3PH



This is a 208 volt, three phase, 1400 Kilowatt full size electric hot water boiler with 30 inch diameter vessel.

Operating temperature and pressure are requested prior to placing an order.

## 480 Volt Ratings

Model Number	Rating MBH	Rating kW	Elements Qty	Elements kW	Number of Circuits	Number of Steps@ kW	Amps (480/3)
BWX20-480F	1638	480	24	20	12	4@80.4@40	578
BWX20-520F	1774	520	26	20	13	5@80.3@40	626
BWX24-560F	1911	560	28	20	14	6@80.2@40	674
BWX24-600F	2047	600	30	20	15	7@80.1@40	722
BWX24-640F	2184	640	32	20	16	8@80	770
BWX24-680F	2320	680	34	20	17	7@80.3@40	818
BWX24-720F	2457	720	36	20	18	8@80.2@40	867
BWX24-760F	2593	760	38	20	19	9@80.1@40	915
BWX24-800F	2730	800	40	20	20	10@80	963
BWX24-840F	2866	840	42	20	21	9@80.3@40	1011
BWX24-880F	3003	880	44	20	22	10@80.2@40	1059
BWX24-920F	3139	920	46	20	23	11@80.1@40	1107
BWX30-960F	3276	960	48	20	24	12@80	1156
BWX30-1000F	3412	1000	50	20	25	1@120.11@80	1204
BWX30-1040F	3548	1040	52	20	26	2@120.10@80	1252
BWX30-1080F	3685	1080	54	20	27	3@120.9@80	1300
BWX30-1120F	3821	1120	56	20	28	4@120.8@80	1348
BWX30-1160F	3958	1160	58	20	29	5@120.7@80	1396
BWX30-1200F	4094	1200	60	20	30	6@120.6@80	1444
BWX30-1240F	4231	1240	62	20	31	7@120.5@80	1493
BWX30-1280F	4367	1280	64	20	32	8@120.4@80	1541
BWX30-1320F	4504	1320	66	20	33	9@120.3@80	1589
BWX30-1360F	4640	1360	68	20	34	10@120.2@80	1637
BWX30-1400F	4777	1400	70	20	35	11@120.1@80	1685
BWX30-1440F	4913	1440	72	20	36	12@120	1733
BWX30-1480F	5050	1480	74	20	37	9@120.5@80	1781
BWX30-1520F	5186	1520	76	20	38	10@120.4@80	1829
BWX30-1560F	5323	1560	78	20	39	11@120.3@80	1877
BWX36-1600F	5459	1600	80	20	40	12@120.2@80	1926
BWX36-1680F	5732	1680	84	20	42	14@120	2022
BWX36-1760F	6005	1760	88	20	44	12@120.4@80	2119
BWX36-1840F	6278	1840	92	20	46	14@120.2@80	2215
BWX36-1920F	6551	1920	96	20	48	16@120	2311
BWX36-2000F	6824	2000	100	20	50	14@120.4@80	2407
BWX42-2080F	7097	2080	104	20	52	16@120.2@80	2503
BWX42-2160F	7370	2160	108	20	54	18@120	2600
BWX42-2240F	7643	2240	112	20	56	16@120.4@80	2696
BWX42-2320F	7916	2320	116	20	58	18@120.2@80	2792
BWX42-2400F	8189	2400	120	20	60	20@120	2888
BWX42-2480F	8462	2480	124	20	62	18@120.4@80	2985
BWX42-2560F	8735	2560	128	20	64	20@120.2@80	3081
BWX42-2640F	9008	2640	132	20	66	22@120	3177
BWX42-2720F	9281	2720	136	20	68	20@120.4@80	3273
BWX42-2800F	9554	2800	140	20	70	22@120.2@80	3369
BWX42-2880F	9827	2880	144	20	72	24@120	3466
BWX42-2960F	10100	2960	148	20	74	2@160.22@120	3562
BWX42-3040F	10372	3040	152	20	76	4@160.20@120	3658
BWX48-3120F	10645	3120	156	20	78	6@160.18@120	3755
BWX48-3200F	10918	3200	160	20	80	8@160.16@120	3851
BWX48-3280F	11191	3280	164	20	82	10@160.14@120	3947
BWX48-3360F	11464	3360	168	20	84	12@160.12@120	4044
BWX48-3440F	11737	3440	172	20	86	14@160.10@120	4140
BWX48-3520F	12010	3520	176	20	88	16@160.8@120	4236
BWX48-3600F	12283	3600	180	20	90	18@160.6@120	4332

Notes: For lower KW ratings, please refer to the Compact Boiler.  
Models above 1600KW are also available in 40KW increments.



**Lochinvar**<sup>®</sup>  
High Efficiency Water Heaters, Boilers and Pool Heaters

Lochinvar Corporation • 300 Maddox Simpson Pkwy • Lebanon, TN 37090 • 615-889-8900 / Fax: 615-547-1000

[www.Lochinvar.com](http://www.Lochinvar.com)